

Orchid Thief Shawlette Errata

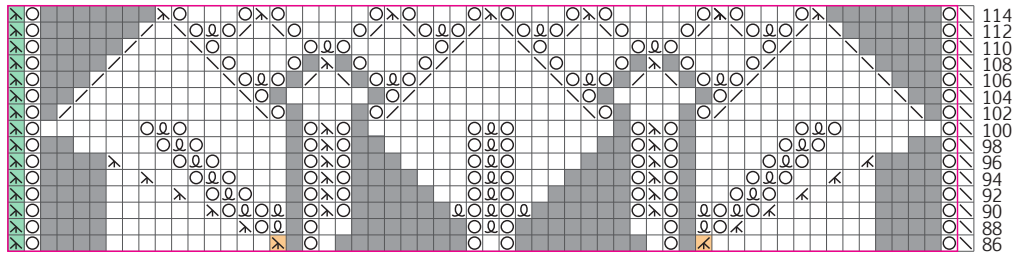
© Ysolda Teague

The repeat box at the centre of chart 3 is incorrectly drawn.

On row 42 there are 2 decreases missing towards the end of the chart.

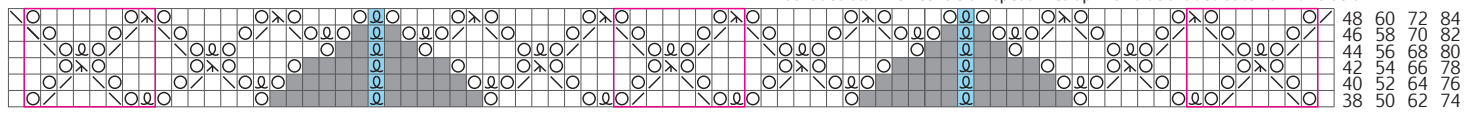
The note below chart 4 is incorrect.

One column of decreases on chart 4 was moved down a row.



On final repeat work this column of decreases as k2tog to mirror the right side.

Knit shaded sts when centre of repeat lines up with blue shaded stitch on rows below



Work this section twice, on either side of centre petal - lining up shaded blue stitches with those in previous chart